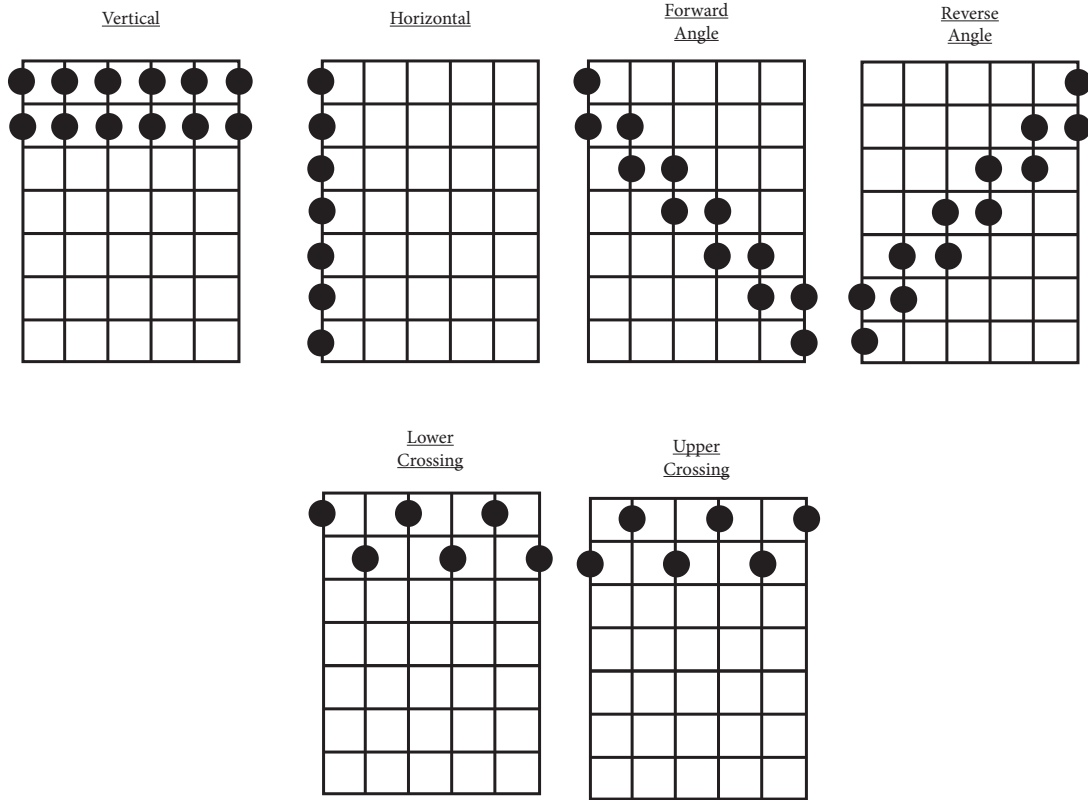
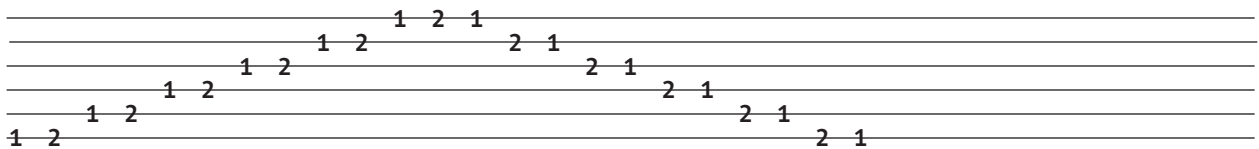


Neighbors

Neighbors is a idea for grouping adjacent fingers. The grouping of the fingers are 1-2, 2-3 and 3-4. Taking these groupings they can be applied to four mechanical ideas, Horizontal, Vertical, Angular and Crossing. Depending on the goal, next is the technique to use, alternate picking, hammer ons, pull offs, economy picking, etcetera. Playing along with a metronome or tapping your foot is ideal to execute these cleanly and accurately.



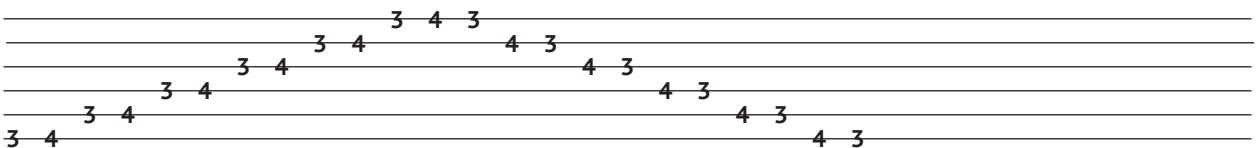
Group 1 - First and Second Finger



Group 2 - Second and Third Finger



Group 3 - Third and Fourth Finger



Not every mechanical variation is tabbed, this is a rough template. Going into this and finding what your playing needs and writing your own variations according to your strengths, weaknesses and goals is the most important. This is not the everything that can be done nor could everything be written into any one single volume.

Neighbors

Part 1

Vertical - 1

A musical staff with five lines. The rhythm pattern is written vertically across the lines. The notes are: 1 2 1 (top line), 2 1 (second line), 1 2 (third line), 2 1 (fourth line), 1 2 (bottom line).

Vertical - 2

A musical staff with five lines. The rhythm pattern is written vertically across the lines. The notes are: 2 1 2 (top line), 1 2 (second line), 2 1 (third line), 1 2 (fourth line), 2 1 (bottom line).

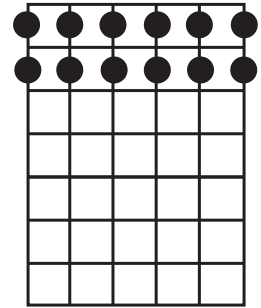
Vertical - 3

A musical staff with five lines. The rhythm pattern is written vertically across the lines. The notes are: 1 2 (top line), 1 2 (second line), 1 2 (third line), 2 1 (fourth line), 2 1 (bottom line).

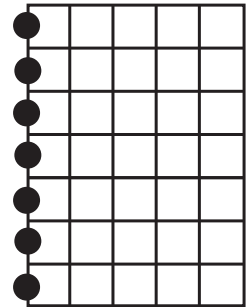
Vertical - 4

A musical staff with five lines. The rhythm pattern is written vertically across the lines. The notes are: 2 1 (top line), 2 1 (second line), 2 1 (third line), 1 2 (fourth line), 2 1 2 (bottom line).

Vertical



Horizontal



Horizontal - 1

A musical staff with five lines. A diagonal slash is drawn across the staff. The rhythm pattern is written horizontally below the staff. The notes are: 1 2 2 3 3 4 4 5 5 6 6 7 7 8 (left of slash), 8 7 7 6 6 5 5 4 4 3 3 2 2 1 (right of slash).

Horizontal - 2

A musical staff with five lines. A diagonal slash is drawn across the staff. The rhythm pattern is written horizontally below the staff. The notes are: 2 1 3 2 4 3 5 4 6 5 7 6 8 7 (left of slash), 7 8 6 7 4 5 3 4 2 3 1 2 (right of slash).

Horizontal - 3

A musical staff with five lines. A diagonal slash is drawn across the staff. The rhythm pattern is written horizontally below the staff. The notes are: 8 7 7 6 6 5 5 4 4 3 3 2 2 1 (left of slash), 1 2 2 3 3 4 4 5 5 6 6 7 7 8 (right of slash).

horizontal - 4

A musical staff with five lines. A diagonal slash is drawn across the staff. The rhythm pattern is written horizontally below the staff. The notes are: 7 8 6 7 5 6 4 5 3 4 2 3 1 2 (left of slash), 2 1 3 2 4 3 5 4 6 5 7 6 8 7 (right of slash).

Neighbors

Part 2

Forward Angle - 1

A musical staff with five lines. The notes and their fingerings are: 6-7-6 (top line), 5-6 (second line), 4-5 (third line), 3-4 (third space), 2-3 (second space), 1-2 (second line), 6-5 (first space), 5-4 (first space), 4-3 (first space), 3-2 (first space), 2-1 (first line).

Forward Angle - 2

A musical staff with five lines. The notes and their fingerings are: 7-6-7 (top line), 6-5 (second line), 5-4 (second space), 4-3 (second space), 3-2 (second space), 2-1 (second line), 6-5 (first space), 5-4 (first space), 4-3 (first space), 3-2 (first space), 2-3 (first space), 1-2 (first line).

Forward Angle - 3

A musical staff with five lines. The notes and their fingerings are: 6-7 (top line), 5-6 (second line), 4-5 (second space), 3-4 (second space), 2-3 (second space), 1-2-1 (second line), 6-5 (first space), 5-4 (first space), 4-3 (first space), 3-2 (first space), 2-3 (first space), 7-6 (top line).

Forward Angle - 4

A musical staff with five lines. The notes and their fingerings are: 7-6 (top line), 6-5 (second line), 5-4 (second space), 4-3 (second space), 3-2 (second space), 2-1-2 (second line), 2-3 (first space), 3-4 (first space), 4-5 (first space), 5-6 (first space), 6-7 (top line).

Reverse Angle - 1

A musical staff with five lines. The notes and their fingerings are: 1-2 (second line), 2-3 (second space), 3-4 (third line), 4-5 (third space), 5-6 (second space), 6-7-6 (top line), 6-5 (first space), 5-4 (first space), 4-3 (first space), 3-2 (first space), 2-1 (first line).

Reverse Angle - 2

A musical staff with five lines. The notes and their fingerings are: 2-1 (second line), 3-2 (second space), 4-3 (second space), 5-4 (second space), 6-5 (first space), 7-6-7 (top line), 5-6 (first space), 4-5 (first space), 3-4 (first space), 2-3 (first space), 1-2 (first line).

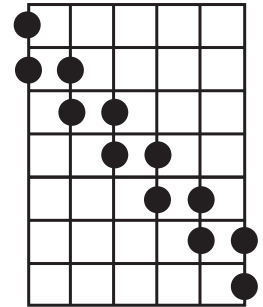
Reverse Angle - 3

A musical staff with five lines. The notes and their fingerings are: 1-2-1 (second line), 2-3 (second space), 3-2 (second space), 4-3 (second space), 5-4 (second space), 6-5 (first space), 7-6 (top line), 6-5 (first space), 5-4 (first space), 4-3 (first space), 3-2 (first space), 2-3 (first space), 1-2-1 (second line).

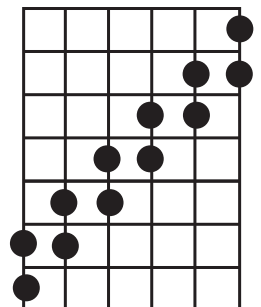
Reverse Angle - 4v

A musical staff with five lines. The notes and their fingerings are: 2-1-2 (second line), 2-3 (first space), 3-4 (first space), 4-3 (first space), 5-4 (first space), 6-5 (first space), 7-6 (top line), 6-5 (first space), 5-6 (first space), 4-5 (first space), 3-4 (first space), 2-3 (first space), 1-2 (first line).

Forward Angle



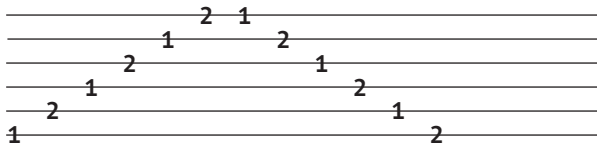
Reverse Angle



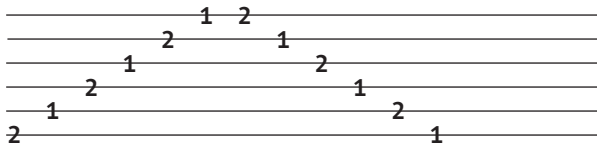
Neighbors

Part 3

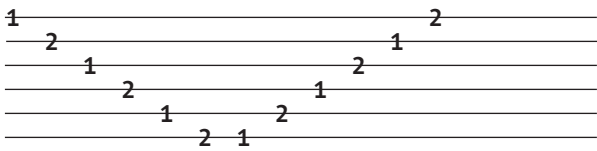
Lower Crossing - 1



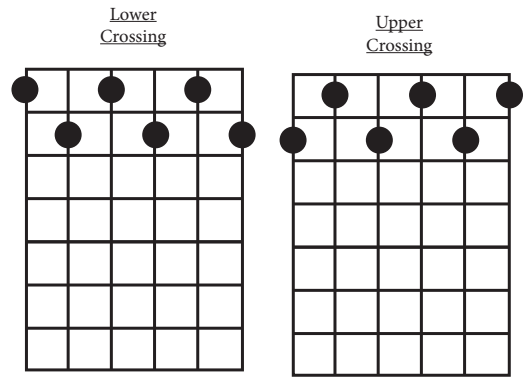
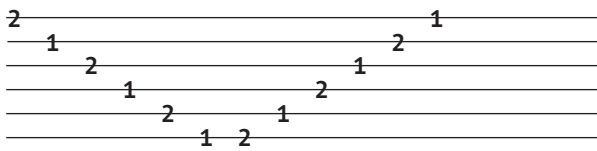
Upper Crossing - 1



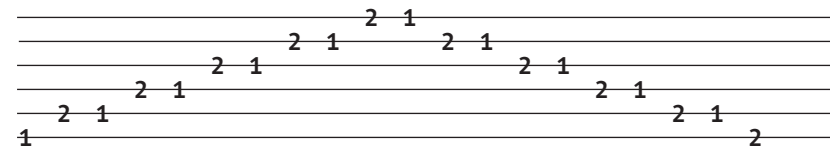
Lower Crossing - 2



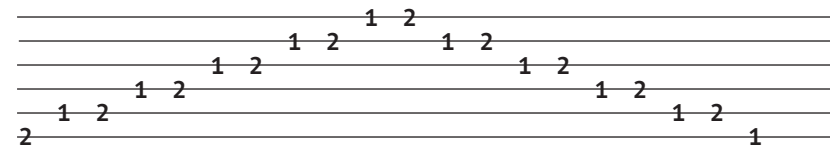
Upper Crossing - 2



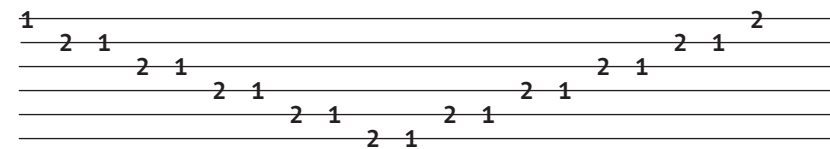
Stacked Crossing - 1



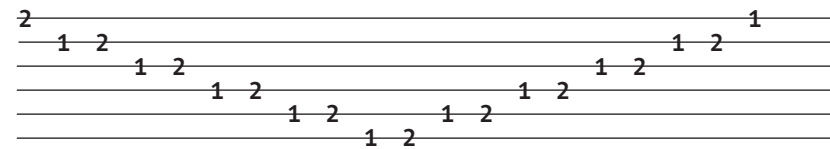
Stacked Crossing - 2



Stacked Crossing - 3



Stacked Crossing - 4



Neighbors

Part 4

Rolling Horizontal - 1

A musical staff with five lines. A diagonal line is drawn from the top line to the bottom line. The notes are represented by numbers 1 through 5. The sequence of numbers is: 1 2 2 3 3 4 | 5 5 4 4 3 3 2.

Rolling Horizontal - 2

A musical staff with five lines. A diagonal line is drawn from the top line to the bottom line. The notes are represented by numbers 1 through 6. The sequence of numbers is: 2 1 1 3 2 2 4 4 3 | 5 5 6 6 4 4 5 3 3 4.

Rolling Horizontal - 3

A musical staff with five lines. A diagonal line is drawn from the top line to the bottom line. The notes are represented by numbers 1 through 5. The sequence of numbers is: 1 2 2 2 3 3 3 4 | 5 5 4 4 4 3 3 2.

Rolling Horizontal - 4

A musical staff with five lines. A diagonal line is drawn from the top line to the bottom line. The notes are represented by numbers 1 through 6. The sequence of numbers is: 2 1 1 3 2 2 4 4 3 | 5 5 6 6 4 4 5 3 3 4.

Rolling Vertical - 1

A musical staff with five lines. A diagonal line is drawn from the top line to the bottom line. The notes are represented by numbers 1 and 2. The sequence of numbers is: 2 2 1 1 | 2 1 2 1 2 1 | 1 2 1 2 1 2 | 1 2.

Rolling Vertical - 2

A musical staff with five lines. A diagonal line is drawn from the top line to the bottom line. The notes are represented by numbers 1 and 2. The sequence of numbers is: 1 2 | 1 2 1 1 2 1 2 | 1 2 1 2 1 2 | 1 2 1 2 1 2.

Rolling Vertical - 3

A musical staff with five lines. A diagonal line is drawn from the top line to the bottom line. The notes are represented by numbers 1 and 2. The sequence of numbers is: 1 1 2 2 | 1 2 1 2 1 2 | 2 1 2 1 2 1 | 2 1 2 1 2 1.

Rolling Vertical - 4

A musical staff with five lines. A diagonal line is drawn from the top line to the bottom line. The notes are represented by numbers 1 and 2. The sequence of numbers is: 2 1 | 2 1 2 1 2 1 | 2 1 2 1 2 1 | 1 2 1 2 1 2.

Neighbors

Part 5

Stacked Horizontal - 1

Stacked Horizontal - 1 musical notation on a four-line staff. The notes are: 1, 2, 1, 2, 2, 3, 2, 3, 3, 4, 3, 4, 4, 3, 4, 3, 3, 2, 3, 2, 2, 1, 2, 1.

Stacked Horizontal - 2

Stacked Horizontal - 2 musical notation on a four-line staff. The notes are: 1, 2, 1, 2, 2, 3, 2, 3, 3, 4, 3, 4, 4, 3, 4, 3, 3, 2, 3, 2, 2, 1, 2, 1.

Stacked Horizontal - 3

Stacked Horizontal - 3 musical notation on a four-line staff. The notes are: 2, 1, 2, 1, 3, 2, 3, 2, 4, 3, 4, 3, 3, 4, 3, 4, 2, 3, 2, 3, 1, 2, 1, 2.

Stacked Horizontal - 4

Stacked Horizontal - 4 musical notation on a four-line staff. The notes are: 2, 1, 2, 1, 3, 2, 3, 2, 4, 3, 4, 3, 3, 4, 3, 4, 2, 3, 2, 3, 1, 2, 1, 2.

Stacked Vertical - 1

Stacked Vertical - 1 musical notation on a four-line staff. The notes are: 1, 2, 1, 2, 1, 2, 1, 2, 1, 2, 1, 2, 1, 2, 1, 2, 1, 2, 1, 2, 1, 2, 1, 2.

Stacked Vertical - 2

Stacked Vertical - 2 musical notation on a four-line staff. The notes are: 1, 2, 1, 2, 1, 2, 1, 2, 1, 2, 1, 2, 1, 2, 1, 2, 1, 2, 1, 2, 1, 2, 1, 2.

Stacked Vertical - 3

Stacked Vertical - 3 musical notation on a four-line staff. The notes are: 2, 1, 2, 1, 2, 1, 2, 1, 2, 1, 2, 1, 2, 1, 2, 1, 2, 1, 2, 1, 2, 1, 2, 1.

Stacked Vertical - 4

Stacked Vertical - 4 musical notation on a four-line staff. The notes are: 2, 1, 2, 1, 2, 1, 2, 1, 2, 1, 2, 1, 2, 1, 2, 1, 2, 1, 2, 1, 2, 1, 2, 1.