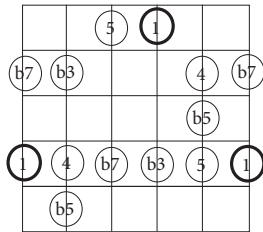
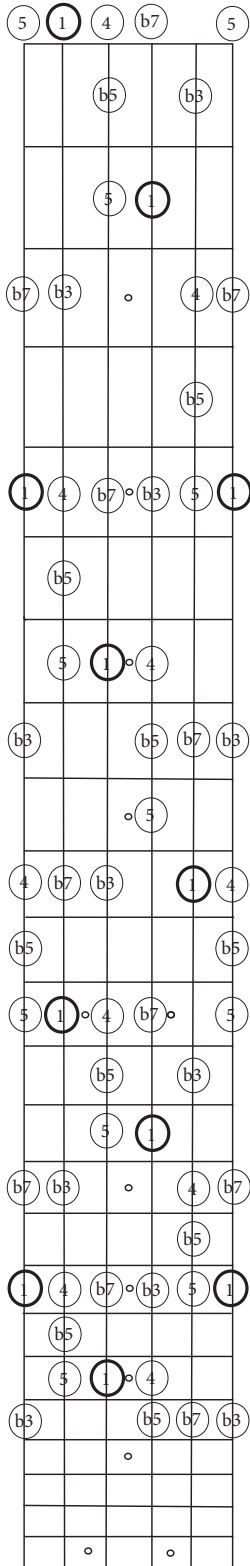
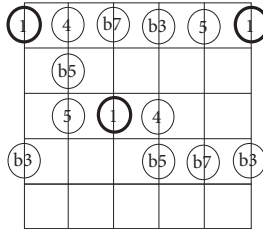


Blues Pentatonic Scale

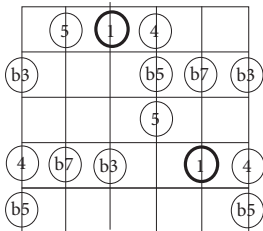
	1	2	3	4	5	6	7	1	2	3	4	5	6	7			
Blues	1		b3	4	b5	5		b7		1		b3	4	b5	5		b7



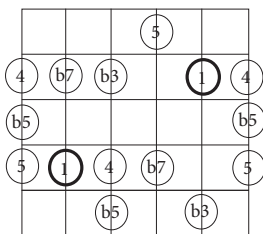
5
G shape



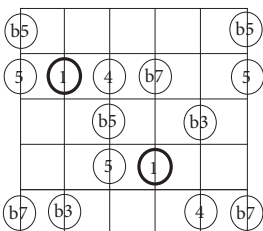
1
E shape



2
D shape



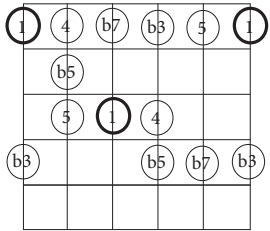
3
C shape



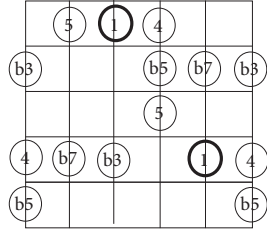
4
A shape

Extended Blues Pentatonic Scale

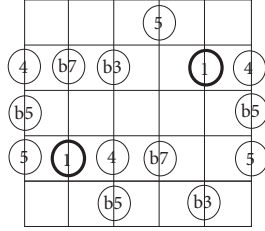
1
E shape



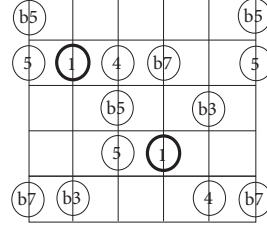
2
D shape



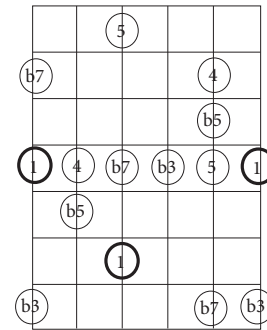
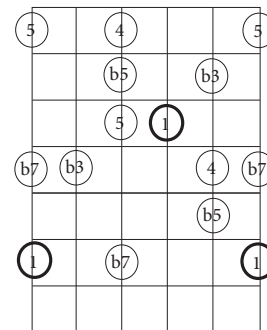
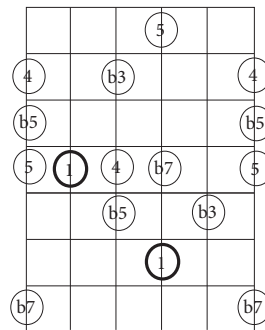
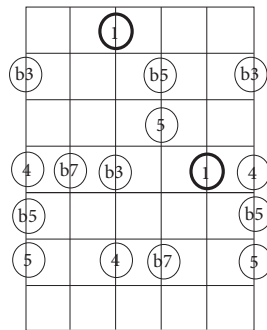
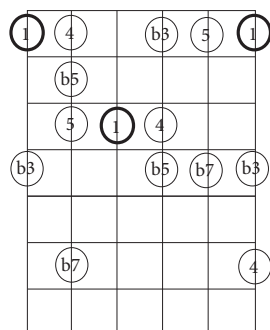
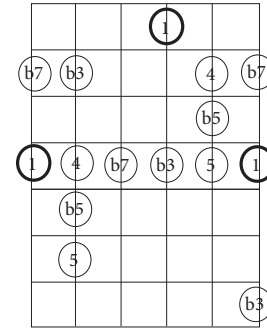
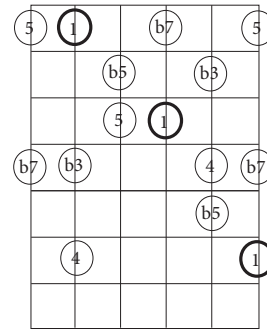
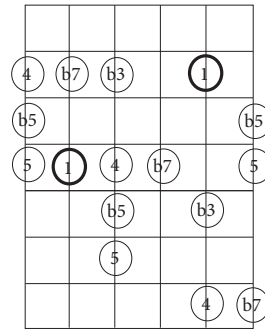
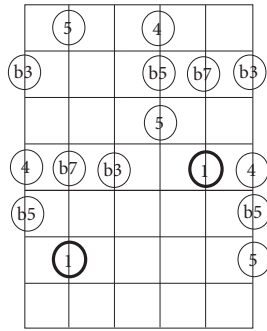
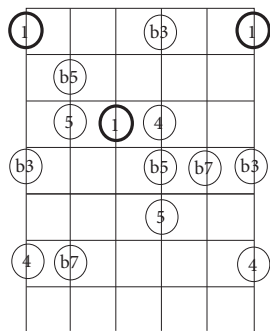
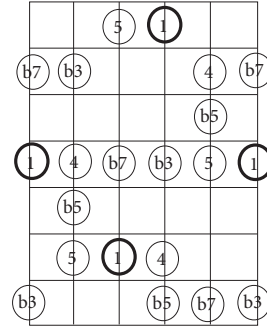
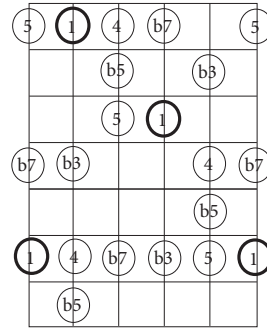
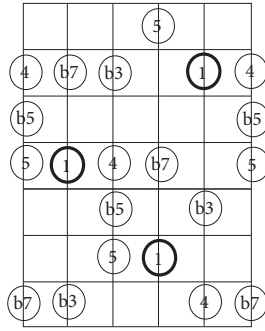
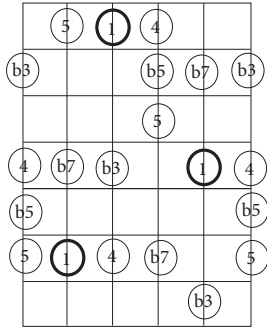
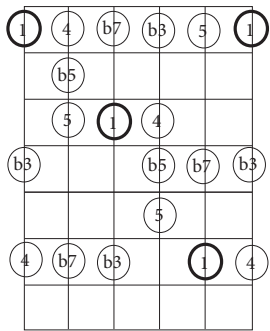
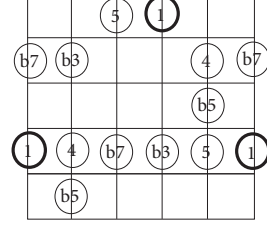
3
C shape



4
A shape



5
G shape



Single String Blues Pentatonic Scale

The image displays six guitar fretboard diagrams, each representing a single-string blues pentatonic scale on a different string. Each diagram is a 6x12 grid representing the fretboard. The scales are as follows:

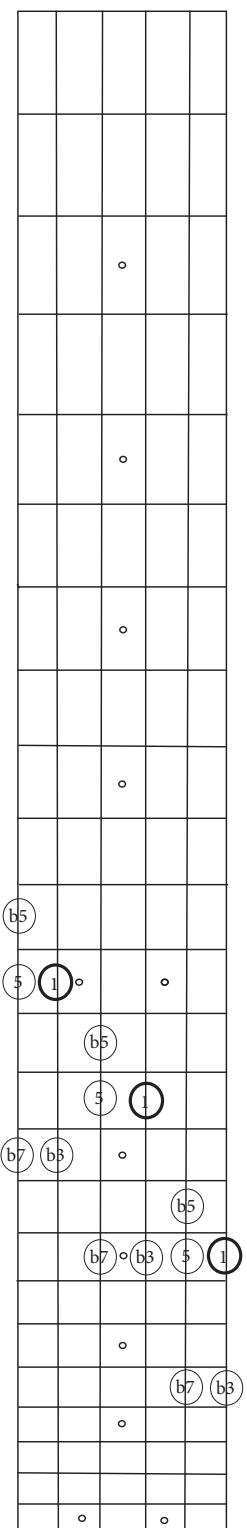
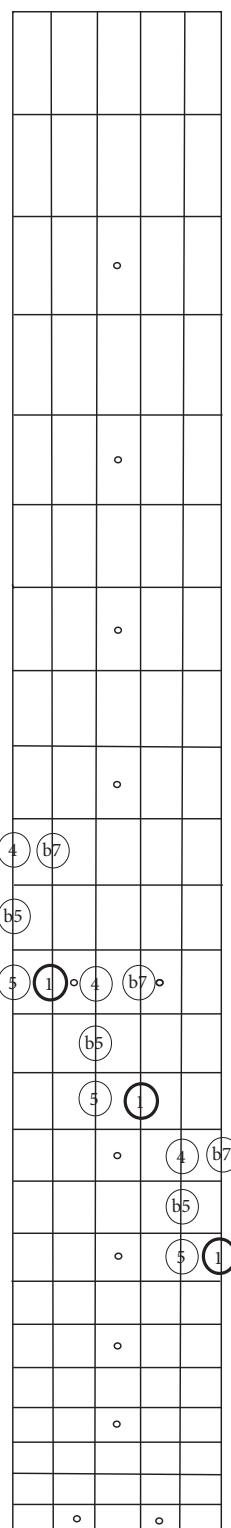
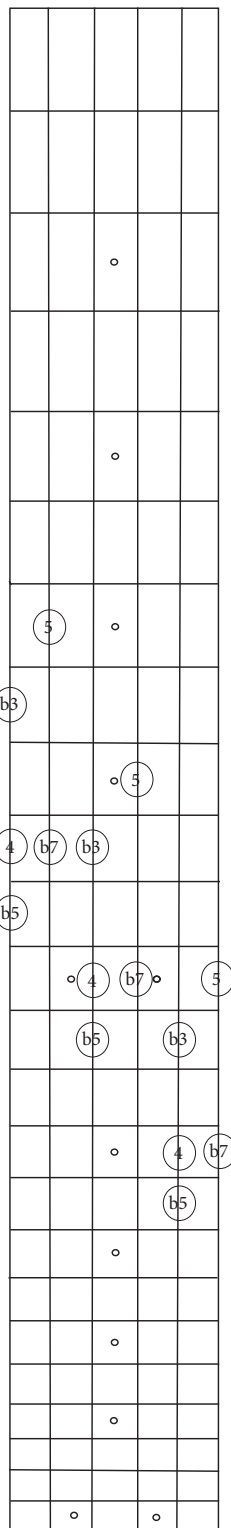
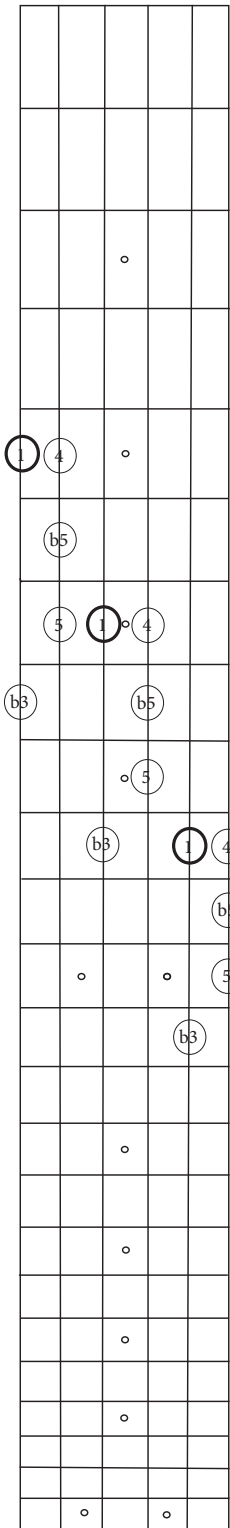
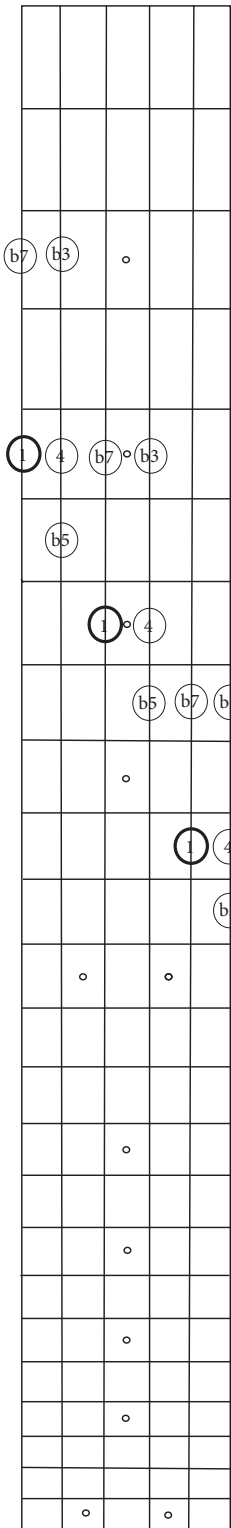
- String 5:** Rooted at the 5th fret. Notes: 5 (5th fret), b7 (7th fret), 1 (9th fret), b3 (11th fret), 4 (12th fret).
- String 1:** Rooted at the 1st fret. Notes: 1 (1st fret), b3 (3rd fret), 4 (4th fret), b5 (5th fret), 5 (6th fret).
- String 4:** Rooted at the 4th fret. Notes: b5 (5th fret), 5 (6th fret), b7 (7th fret), 1 (8th fret), b3 (9th fret).
- String b7:** Rooted at the b7th fret. Notes: 1 (b7th fret), 4 (b8th fret), b3 (b9th fret), b5 (b10th fret), 5 (b11th fret).
- String b3:** Rooted at the b3rd fret. Notes: b3 (b3rd fret), b7 (5th fret), 1 (6th fret), 4 (7th fret), b5 (8th fret).
- String 5:** Rooted at the 5th fret. Notes: 5 (5th fret), b7 (7th fret), 1 (9th fret), b3 (11th fret), 4 (12th fret).

Two String Blues Pentatonic Scale

The diagram illustrates five different pentatonic scale patterns for the two-string blues scale, arranged in five vertical columns. Each column represents a different starting fret and fingering approach. The fretboard is divided into six strings (top to bottom) and six frets (left to right). Fingerings are indicated by numbers 1-5 in circles, and accidentals (b3, b5, b7) are shown in circles. Small circles with a dot represent natural notes.

- Column 1:** Starts at fret 1, 5th string. Fingering: 1 (1st fret, 5th string), 1 (1st fret, 4th string), 4 (2nd fret, 4th string), 5 (2nd fret, 3rd string), b3 (3rd fret, 3rd string), b5 (3rd fret, 2nd string).
- Column 2:** Starts at fret 1, 4th string. Fingering: 1 (1st fret, 4th string), 4 (1st fret, 3rd string), b3 (2nd fret, 3rd string), 5 (2nd fret, 2nd string), b5 (2nd fret, 1st string), 1 (3rd fret, 1st string).
- Column 3:** Starts at fret 4, b7 (4th string). Fingering: 4 (4th fret, 4th string), b7 (4th fret, 3rd string), b5 (4th fret, 2nd string), 1 (5th fret, 2nd string), 4 (5th fret, 1st string), b3 (5th fret, 1st string).
- Column 4:** Starts at fret b7 (5th string). Fingering: b7 (7th fret, 5th string), 1 (7th fret, 4th string), b3 (8th fret, 4th string), 5 (8th fret, 3rd string), b5 (8th fret, 2nd string), 4 (9th fret, 2nd string).
- Column 5:** Starts at fret 5, 5th string. Fingering: 5 (5th fret, 5th string), b3 (5th fret, 4th string), 4 (6th fret, 4th string), b7 (6th fret, 3rd string), b5 (6th fret, 2nd string), 1 (7th fret, 2nd string).

Blues Pentatonic Scale



Blues Pentatonic Scale

The diagram illustrates five positions of the Blues Pentatonic Scale on a guitar fretboard. Each position is shown on a vertical grid representing the fretboard (5 strings by 12 frets). Notes are indicated by circles containing their fret number or accidental (e.g., 5, 1, b7, b3, 4, b7, b3, 5, 1, b5, 4, b5, 5, 4, b5, b7, b3, 4, b5, 5, b7, b3, 1, 4, b7, b3, 1, 4, b5, 5, 1, 4, b7, 5, b5, b3, 5, 1, 4, b7, b5, b3, 5, 1, 4, b7, b5, b7, b3, 5, 1, b7, b3). Some notes are circled in bold to indicate primary fingerings.

Position 1: Notes are at frets 5 (circled), 1 (circled), 5, 1, b7, b3, 4, b7, b3, 5, 1 (circled), b5, 4, b5, 5, 4, b5, b7, b3, 4, b5, 5, b7, b3, 1 (circled), 4, b7, b3, 1 (circled), 4, b5, 5, 1, 4, b7, 5, b5, b3, 5, 1 (circled), 4, b7, b5, b7, b3, 5, 1 (circled), b7, b3.

Position 2: Notes are at frets b7, b3, 1 (circled), 4, b7, b3, b5, 5, 1 (circled), 4, b5, b7, b3, 1 (circled), 4, b7, b3, 1 (circled), 4, b5, 5, b7, b3, 1 (circled), 4, b5, 5, 1, 4, b7, 5, b5, b3, 5, 1 (circled), 4, b7, b5, b7, b3, 5, 1 (circled), b7, b3.

Position 3: Notes are at frets 1 (circled), 4, b5, 5, 1 (circled), 4, b7, b3, 1 (circled), 4, b5, 5, b7, b3, 1 (circled), 4, b7, b3, 1 (circled), 4, b5, 5, b7, b3, 1 (circled), 4, b7, b3, 1 (circled), 4, b5, 5, b7, b3, 1 (circled), 4, b7, b5, b7, b3, 5, 1 (circled), b7, b3.

Position 4: Notes are at frets b3, b5, 4, b7, b3, b5, 5, 1 (circled), 4, b7, 5, b5, b3, 5, 1 (circled), 4, b7, 5, b5, b3, 5, 1 (circled), 4, b7, b5, b7, b3, 5, 1 (circled), 4, b7, b5, b7, b3, 5, 1 (circled), 4, b7, b5, b7, b3, 5, 1 (circled), b7, b3.

Position 5: Notes are at frets 4, b5, 5, 1 (circled), 4, b7, b3, 5, 1 (circled), 4, b7, b5, b7, b3, 5, 1 (circled), 4, b7, b5, b7, b3, 5, 1 (circled), 4, b7, b5, b7, b3, 5, 1 (circled), 4, b7, b5, b7, b3, 5, 1 (circled), 4, b7, b5, b7, b3, 5, 1 (circled), b7, b3.